

Class 2A

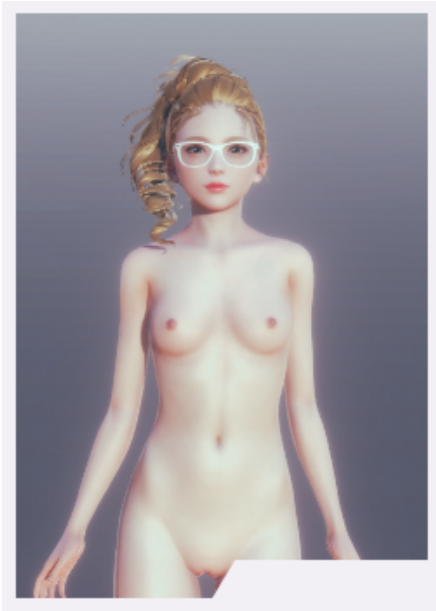
All Students in Class 2A

This category is not maintained as Class 2A will be put on-hold!c!bp

- [Amelie Mori](#)
- [Hiroshi Suzuki](#)
- [Ivy Schmidt](#)
- [Marie Rose](#)
- [Miela Frejadottir](#)
- [Nina Abe](#)
- [Saito Shiori](#)
- [Sofia Harada](#)
- [Thanchanok Cooper](#)
- [Yamaoka Yuka](#)
- [Yuka Tanimoto](#)
- [Yukari Hashiguchi](#)

Amelie Mori

[h{pt !\[thumb\]\(https://wiki.suit-ji.com/attachments/106\) c!pp}](https://wiki.suit-ji.com/attachments/106)



- Height: 155.8 cm
- Bra Size: 65AA
- B-W-H: 66-57-80cm
- Waist-to-Hips: 0.717

Clothing

Uniform



Level 0



Level 1 - with Overall



Level 1 - without Overall

Hiroshi Suzuki

[h{pt !\[thumb\]\(https://wiki.suit-ji.com/attachments/107\) c!pp}](https://wiki.suit-ji.com/attachments/107)



- Height: 150.7 cm
- Bra Size: 65AA
- B-W-H: 63-61-79cm
- Waist-to-Hips: 0.766

Clothing

Uniform



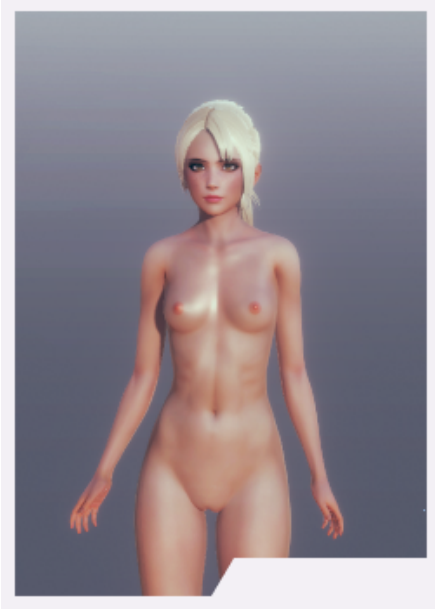
Level 0



Level 1

Ivy Schmidt

`h{pt ![thumb](https://wiki.suit-ji.com/attachments/108) c!pp}`



- Height: 161.7 cm
- Bra Size: 60B
- B-W-H: 64-60-84cm
- Waist-to-Hips: 0.705

Clothing

Uniform



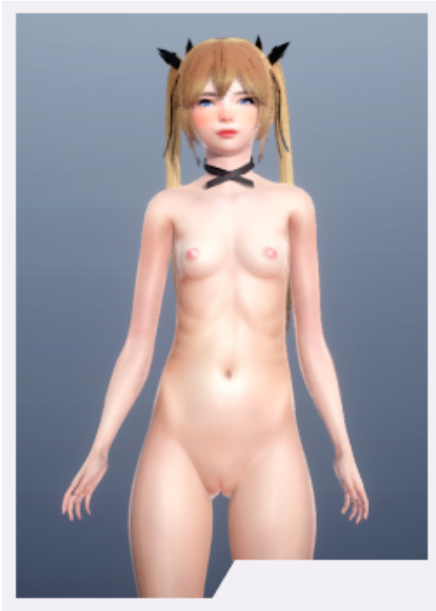
Level 0



Level 1

Marie Rose

`h{pt ![thumb](https://wiki.suit-ji.com/attachments/109) c!pp}`



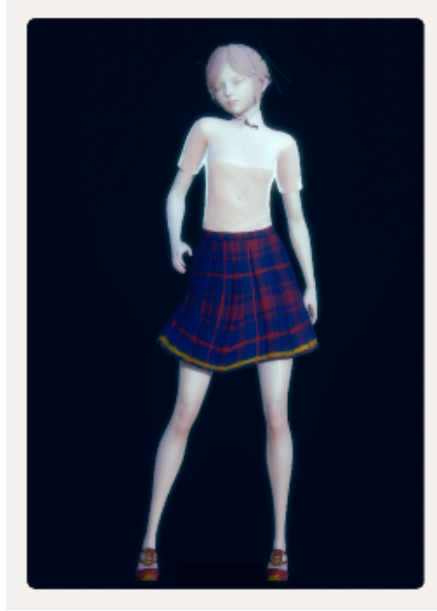
- Height: 163.0 cm
- Bra Size: 60AA
- B-W-H: 62-59-96cm
- Waist-to-Hips: 0.614

Clothing

Uniform



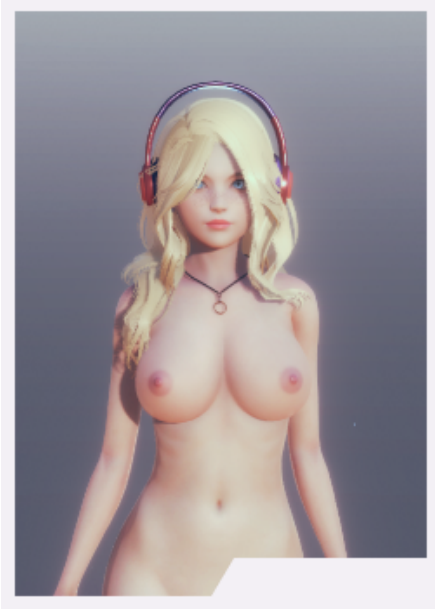
Level 0



Level 1

Miela Frejadottir

[h{pt !\[thumb\]\(https://wiki.suit-ji.com/attachments/110\) c!pp}](https://wiki.suit-ji.com/attachments/110)



- Height: 160.2 cm
- Bra Size: 65DD (E)
- B-W-H: 78-61-89cm
- Waist-to-Hips: 0.685

Clothing

Uniform



Level 0



Level 1

Nina Abe

`h{pt ![thumb](https://wiki.suit-ji.com/attachments/111) c!pp}`



- Height: 156.6 cm
- Bra Size: 70AA
- B-W-H: 68-64-87cm
- Waist-to-Hips: 0.732

Clothing

Uniform



Level 0



Level 1

Saito Shiori

`h{pt ![thumb](https://wiki.suit-ji.com/attachments/112) c!pp}`



- Height: 149.4 cm
- Bra Size: 65AA
- B-W-H: 67-63-80cm
- Waist-to-Hips: 0.785

Clothing

Uniform



Level 0



Level 1

Sofia Harada

`h{pt ![thumb](https://wiki.suit-ji.com/attachments/113) c!pp}`



- Height: 152.3 cm
- Bra Size: 60B
- B-W-H: 65-62-84cm
- Waist-to-Hips: 0.741

Clothing

Uniform



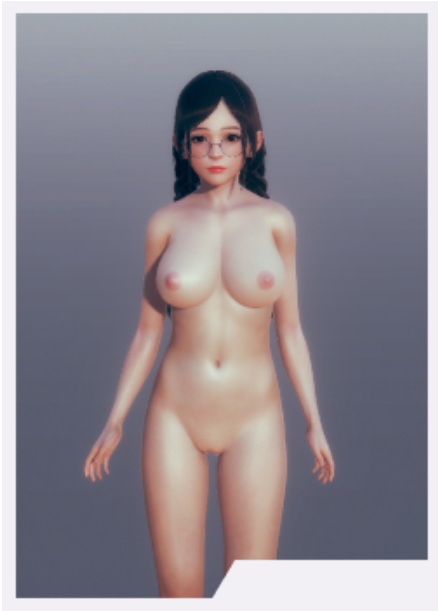
Level 0



Level 1

Thanchanok Cooper

[h{pt !\[thumb\]\(https://wiki.suit-ji.com/attachments/114\) c!pp}](https://wiki.suit-ji.com/attachments/114)



- Height: 153.3 cm
- Bra Size: 65DD (E)
- B-W-H: 77-61-79cm
- Waist-to-Hips: 0.770

Clothing

Uniform



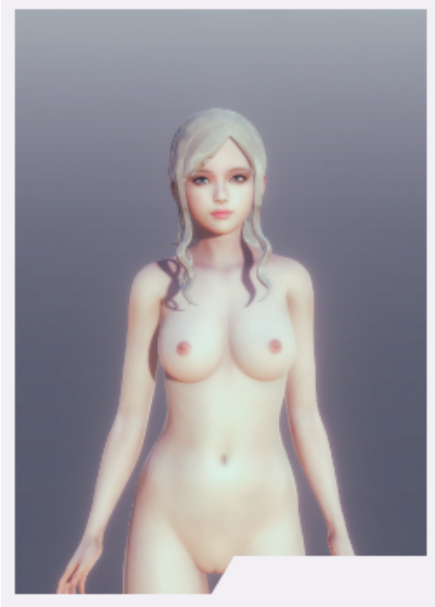
Level 0



Level 1

Yamaoka Yuka

[h{pt !\[thumb\]\(https://wiki.suit-ji.com/attachments/115\) c!pp}](https://wiki.suit-ji.com/attachments/115)



- Height: 162.5 cm
- Bra Size: 65C
- B-W-H: 72-66-87cm
- Waist-to-Hips: 0.762

Clothing

Uniform



Level 0



Level 1

Yuka Tanimoto

`h{pt ![thumb](https://wiki.suit-ji.com/attachments/116) c!pp}`



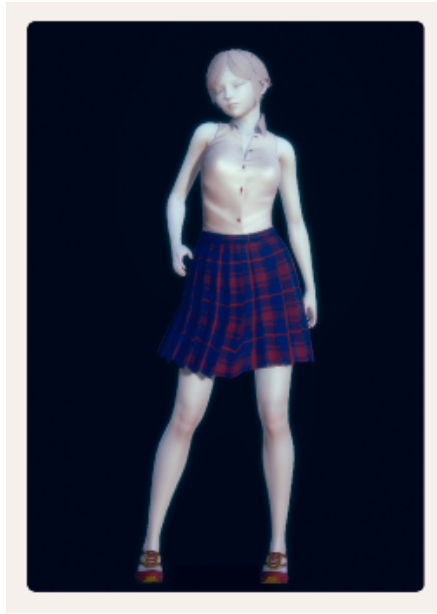
- Height: 145.5 cm
- Bra Size: 65AA
- B-W-H: 61-57-76cm
- Waist-to-Hips: 0.755

Clothing

Uniform



Level 0



Level 1

Yukari Hashiguchi

`h{pt ![thumb](https://wiki.suit-ji.com/attachments/117) c!pp}`



- Height: 150.3 cm
- Bra Size: 65AA
- B-W-H: 64-62-80cm
- Waist-to-Hips: 0.775

Clothing

Uniform



Level 0



Level 1